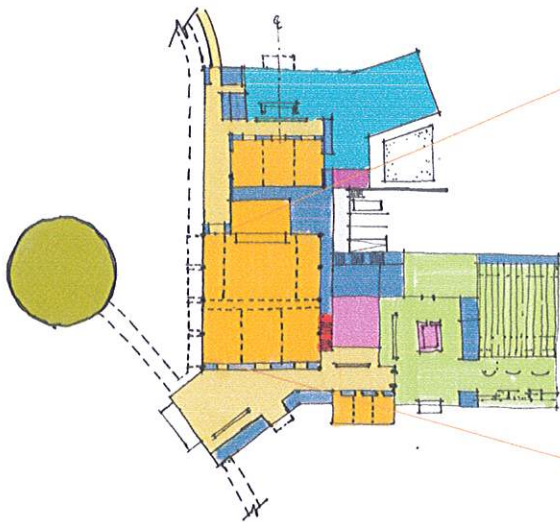


# **Rio Grande Valley Epicenter**

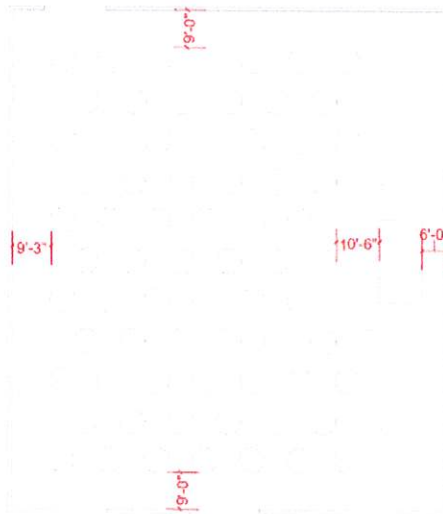
CONVENTION CENTER

TABLE LAYOUT STUDY

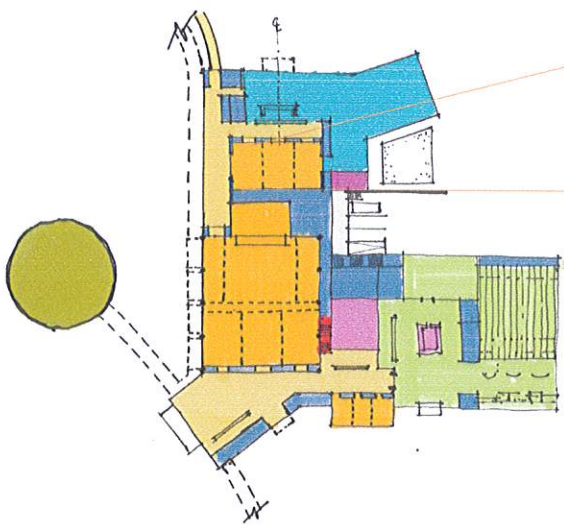
12/11/2020



Meeting Room 120' x 105"  
 74 Banquet Tables  
 (72" Round/ 8-10 Seats)  
 740-888 Total Seats



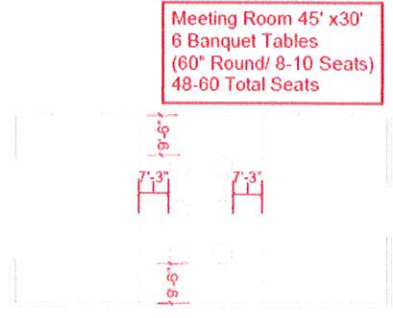
**MAIN HALL**



Meeting Room 45' x 90'  
 19 Banquet Tables  
 (60" Round/ 8-10 Seats)  
 152-190 Total Seats



Meeting Room 45' x 30'  
 6 Banquet Tables  
 (60" Round/ 8-10 Seats)  
 48-60 Total Seats



## MEETING ROOMS

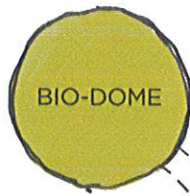
# San Benito

Multipurpose - 12,600 sf

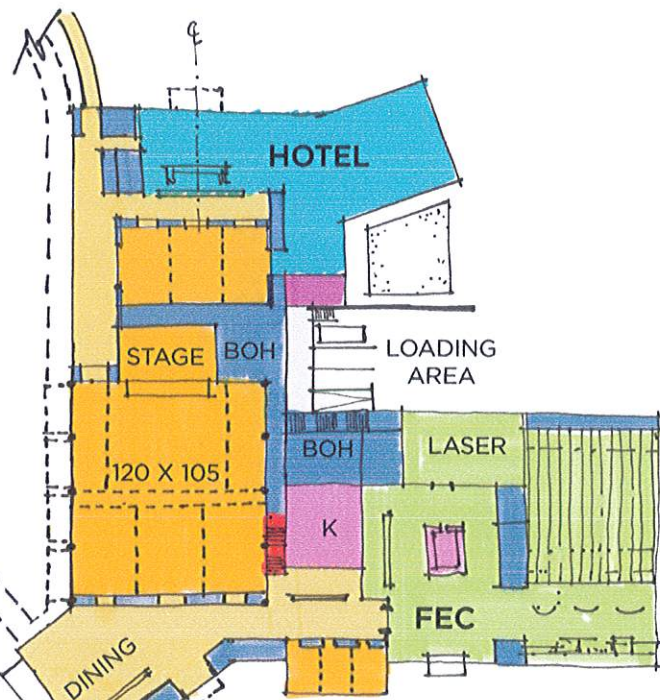
- 700 banquet
- 1500 concert

Gross Area Less Hotel Level G - 55,000 sf

- Meeting Rooms - at hotel
- Board Rooms - at FEC



LAGOON



**GROUND LEVEL**

RGVE - Convention Center Discussion

12/11/2020

# San Benito

Mezzanine - 450 seats

- Bar
- Club Room

Enclosed Convention Area Level Mezz - 8600 sf

- Elevated Causeway
- Dining Terrace

